

Repositioning Made Simple

Swift[®]
ULTRASLIDE SYSTEM

MOVING IN THE RIGHT DIRECTION!



MIP recognizes that manual repositioning exposes caregivers to increased risk of neck, shoulder, and back injuries. That's why we have developed the Swift Slider, a cost-effective, low-friction taffeta repositioner intended to allow caregivers to safely and easily perform handling tasks with little physical strain.

Implementing the standard use of this repositioner will create a safer healthcare environment for caregivers, ensure the comfort and security of patients/residents, and support your no-lift policy!

WHO IS SWIFT FOR?

- Facilities dealing with staff injuries to arm/shoulder or back, as a result of lifting or repositioning patients/residents
- Personnel using bedpads to reposition patients/residents
- Patients/residents not fully benefiting from the desired effects of their pressure redistribution surfaces due to unnecessary layering of products
- Patients/residents requiring assistance with bed mobility
- Healthcare facilities with budgetary constraints



BREATHABLE REPOSITIONER

OUR BREAKTHROUGH

WhooTex®

100% SYNTHETIC SURFACE

OUTPERFORMS ALL OTHER SLIDERS

FEATURES	Whootex	Competitors
Soft hand feel	✓	✗
No pilling	✓	✗
Shrinks evenly	✓	✗
Unique stain release	✓	✗
Ultra white	✓	✗

THE SWIFT SLIDER ANSWERS YOUR NEEDS ACROSS THE BOARD!

- Low-friction backing allows staff to reposition patients/residents safely and easily
- Breathable taffeta backing avoids heat buildup under patients/residents
- Generous sizing provides maximum support
- Available in an assortment of sizes to meet the needs of a wider range of patients/residents and uses

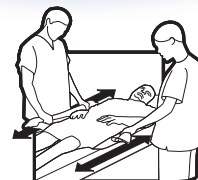
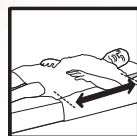
Note: The Swift Slider can be washed along with regular bed linens.

USAGE GUIDELINES FOR THE SWIFT SLIDER:

- Ensure brakes of bed are on
- Place pillow at head of bed to avoid accidental head injury
- Place Swift on bed with low-friction taffeta panel down; place incontinence pad on top of Swift (if needed)
- Position patient/resident centrally on white Swift surface. The central panel should support patient/resident from neck to just below the buttocks
- Bend patient/resident's knees to protect heels from being dragged across linens
- Lower the side rails and raise the bed to almost elbow height of the shorter caregiver
- There should be a caregiver on each side of bed. Each holds Swift with two hands - one at shoulder height and one at hip height
- To move patient/resident, gather Swift as close as possible to patient/resident's body. Reposition by laterally shifting body weight
- Once patient/resident is repositioned, smooth out sliding sheet and tuck flaps securely under mattress

Please remember:

- We strongly advise against using Swift for lifting



NE PAS SOULEVER
NO LIFT
NO LEVANTAR

LOAD FORCE TEST (Lab & Hospital Tested)

Objective: To determine load/force required to move 200 lbs on a hospital bed using a fixed apparatus.

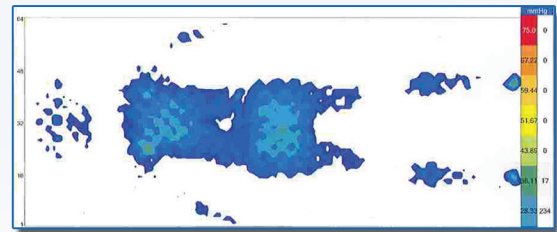
BED SHEET	Item	Maximum Force % Δ	Average Force % Δ
Standard Bottom Sheet	Drawsheet	Base	Base
	Underpad	-29%	-26%
	Swift	-46%	-46%
UltraSlide Bottom Sheet	Swift	-60%	-60%

Conclusion: Swift UltraSlide System reduces the force required to reposition a patient/resident in bed by 60%, therefore reducing the overall strain on the caregiver.

Findings obtained from an independent laboratory study. Details available upon request

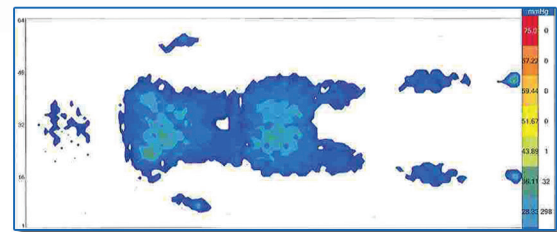
PRESSURE MAPPING

Swift's thin profile should not impair the performance of pressure redistribution mattresses, and can therefore remain beneath patients/residents at all times – so it's always there when you need it.



Without Swift

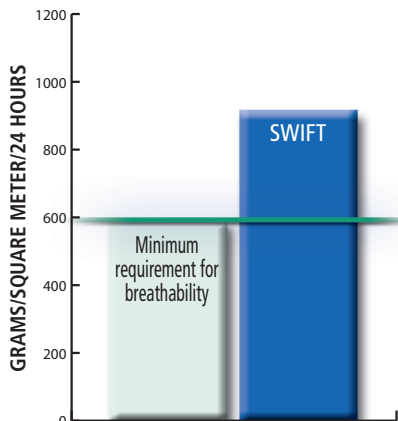
Male, 68 years old, 6'0 tall, 190 lbs., Back lie flat
Average pressure = 18.02 Peak pressure = 43.4



With Swift

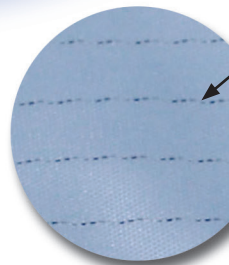
Male, 68 years old, 6'0 tall, 190 lbs., Back lie flat
Average pressure = 18.84 Peak pressure = 44.95

BREATHABILITY reduces the risk of heat and moisture build-up under the patient/resident, enhancing comfort.



**MOISTURE VAPOR TRANSMISSION RATE (MVTR)/
MOISTURE VAPOR PENETRATION RATE (MVPR)**

MVTR= 918 g/m²-24hrs



Swift UltraSlide System

More than any other occupation or industry, nursing personnel file for the highest number of operational injuries related to back pain (National Institute for Occupational Safety And Health). In order to prevent such injuries, MIP has developed UltraSlide, a fitted bottom sheet modified with a low-friction panel down the center, to be used together with Swift. UltraSlide should be used when patients/residents have little or no mobility and require extensive or total assistance for repositioning in bed.

Used individually or together, the two parts of the Swift UltraSlide System reduce the force required to turn or reposition bed-bound patients/residents.

THE SWIFT ULTRASLIDE SYSTEM IS A BREEZE!

- Central low-friction panel significantly reduces resistance when used in conjunction with Swift
- Carbon fibers reduce static build-up
- Special, stretch UltraKnit construction provides a smooth surface and accommodates a wide range of healthcare mattress sizes
- Durable, 100% synthetic fabric ensures quick drying and longevity in demanding environments
- Proper use should significantly reduce the risk of neck, shoulder and back injuries caused by repositioning
- Also available in bariatric and stretcher sizes

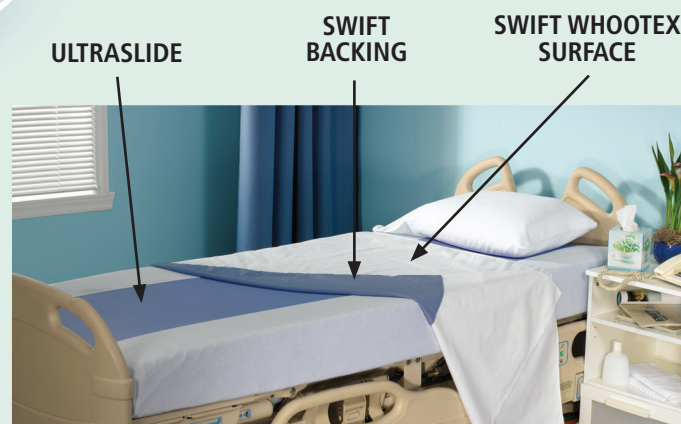


USAGE GUIDELINES FOR SWIFT ULTRASLIDE SYSTEM:

- Place UltraSlide over mattress, as you would a normal fitted sheet
- Place Swift across UltraSlide, with blue sides facing each other
- Position Swift so that it supports shoulder to hip area
- Reposition patient/resident using appropriate protocol (refer to usage guidelines for Swift)
- Once you've positioned patient/resident's hips to appropriate area, tuck in Swift to keep it from sliding

Note:

- If head of bed needs to be elevated, raise knee gatch to prevent patient/resident from sliding down mattress
- Position patient/resident's hips in bend of bed. If hips go above that zone, patient/resident will slide down by force of gravity



SPECIFICATIONS SWIFT SLIDERS

STYLE NUMBER	FABRIC CONTENT	DIMENSIONS	WEIGHT	APPLICATION
PTD-56	Surface: Whootex Backing: Low friction, royal blue	40" x 72" (100 cm x 185 cm)	10.7 oz (304 g)	Designed to be used on its own, or with the standard size UltraSlide Bottom sheet
PTD-56/BA/Y	Surface: Whootex Backing: Low friction, yellow	50" x 72" (126 cm x 183 cm)	13.5 oz (383 g)	Designed to be used on its own, or with a bariatric UltraSlide Bottom sheet
PTD-31	Surface: Whootex Backing: Low friction, orange	40" x 54" (100 cm x 140 cm)	8.4 oz (237 g)	Designed to be used on its own, or with the stretcher UltraSlide Bottom sheet

Also available in an impermeable version (PTD-6)

SPECIFICATIONS ULTRASLIDE BOTTOM SHEETS

STYLE NUMBER	FABRIC CONTENT	DIMENSIONS	WEIGHT	APPLICATION
PTD-LS/S	Sheet: UltraKnit Central panel: Low friction with carbon fibers, blue	Width: 32" to 36" (81 to 91 cm) Length: 78" to 84" (198 to 213 cm) Depth: 4" to 8" (10 to 20 cm)	21.2 oz (600 g)	Designed for standard size mattresses
PTD-LS/S/BA/Y	Sheet: UltraKnit Central panel: Low friction with carbon fibers, blue	Width: 52" to 56" (132 to 142 cm) Length: 78" to 84" (198 to 213 cm) Depth: 6" to 10" (15 to 25 cm)	24.2 oz (685 g)	Designed for bariatric mattresses
PTD-LS/S/BA1/Y	Sheet: UltraKnit Central panel: Low friction with carbon fibers, blue	Width: 46" to 50" (117 to 127 cm) Length: 78" to 84" (198 to 213 cm) Depth: 5" to 9" (13 to 23 cm)	22 oz (625 g)	Designed for bariatric mattresses
PTD-LS/S/31	Sheet: UltraKnit Central panel: Low friction with carbon fibers, blue	Width: 28" to 31" (71 to 79 cm) Length: 74" to 78" (188 to 198 cm) Depth: 3" to 5" (8 to 13 cm)	13.9 oz (394 g)	Designed for stretcher mattresses



MOVING IN THE RIGHT DIRECTION!